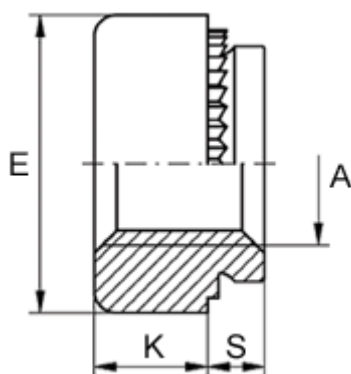


Article number: 12502000100100
Description: KLEE-coil 502 000 100.100
M10 Hardened, zinc-pl./chr. yellow

Measures



Female thread A	= M10
Height K	= 7.0
Max recess height	= 3.0
Min distance to edge	= 5.0
Outer diameter E	= 15.0
Plate thickness	= 3.3 to 6.3
Recommended bore diameter +0.05	= 13.00